

Angel Giraldez

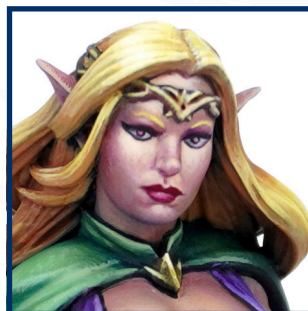
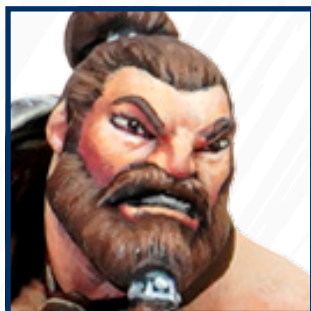
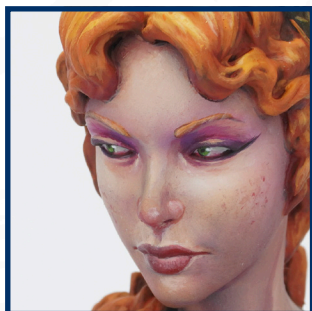
# MASTERCCLASS



GIRALDEZ



Painting the face of a miniature is **the worst nightmare** for many amateur and professional painters. Due to the importance of this part of the miniature and everything that conveys (sensations, feelings or facial expressions), we should dedicate it special care and fondness. This extra time is necessary to paint this part, which is the first thing that catches our sight.



In this masterclass you will learn to paint a face following a quite simple process.

And thanks to the new GAME COLOR's SKIN TONE set (Vallejo Acrylics) you will be able to do it in no time  
**YOU CAN DO IT!**



**1.**

Apply 2 thin layers of Anthea Skin (Ref.72.107).

**TIP\***

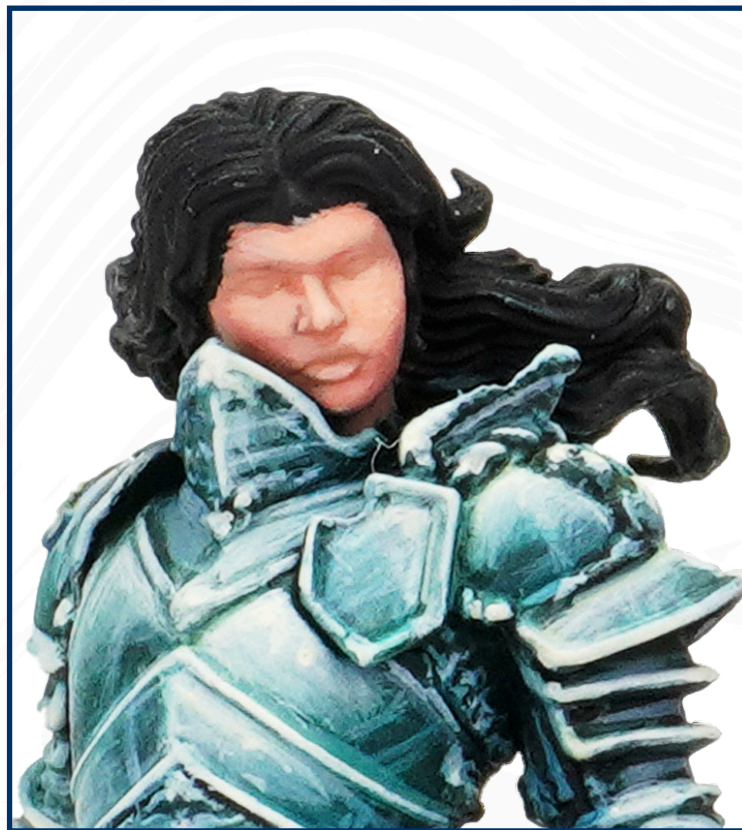
**2 thin layers better than 1 thin one.**



## 2.

First highlight.

Apply Rosy Flesh (Ref. 72.107) to forehead, nose bridge, checks, jaw and lips



## 3.

With Pale Flesh (Ref. 72.003) continue highlighting the skin, but reducing the highlighted area.

If you do not reduce the highlighted area, you will obscure the previous work.





# 4.

Apply shadows with Succubus Skin (Ref. 72108) (like Kim Kardashian does).

Shading cheekbones is paramount in order to add contrast and slim down a face.

Next, paint the eye sockets with black and retouch the last highlight with Pale Flesh (Ref. 72.003).



# 5.

Add expressiveness to the face with a little black dot on the eyes with a 0/4 ARTIS OPUS brush, series S.





6.

Final Result.







**GIRALDEZ**



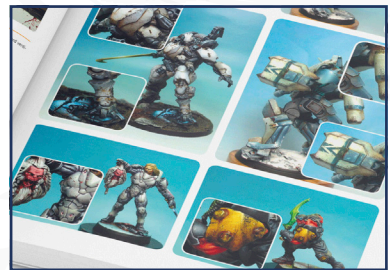
**#PaintBIG** 





If you have liked this Masterclass, if you want to learn much more and want to take your painting skills beyond, do not miss my two books: **VOL. 1** and **VOL. 2**.

# Painting better is possible!



**GIRALDEZ**