

Angel Giraldez

# MASTERCLASS



GIRALDEZ

# How to paint a **Face** by airbrush

At this masterclass I will show you how to paint a face using my new airbrush, the **GIRALDEZ INFINITY**.



The innovative design of this airbrush has been thought for painting miniatures, after having invested many years on tests, looking for the best design and technology.

All of the inner mechanisms were modified, without missing the trigger, in order to bring you the best precision to paint small figures.

In addition, it will help you to paint faster, and with a smoother result, **You will love it!**



If you want to know all of the changes, here there is a video where I talk about them all, one-by-one:

[https://www.youtube.com/watch?v=dUc\\_KFQA3gl&t=151s](https://www.youtube.com/watch?v=dUc_KFQA3gl&t=151s)



#### REMARK:

I will use a 0.4mm needle, and 1.8 pressure BAR. Paint ratio to airbrush is:  
3 drops of paint for each 7 drops of Airbrush Thinner.



# 1.

I apply 3 thin layers of Airbrush Black Primer Ref. 71.261 by Vallejo.

# 2.

For the base color of the skin I use Succubus Skin Ref. 72.108 by Vallejo and I dilute it with Airbrush Thinner Ref. 71.261.

I apply thin layers until I get a uniform coverage over the whole face.

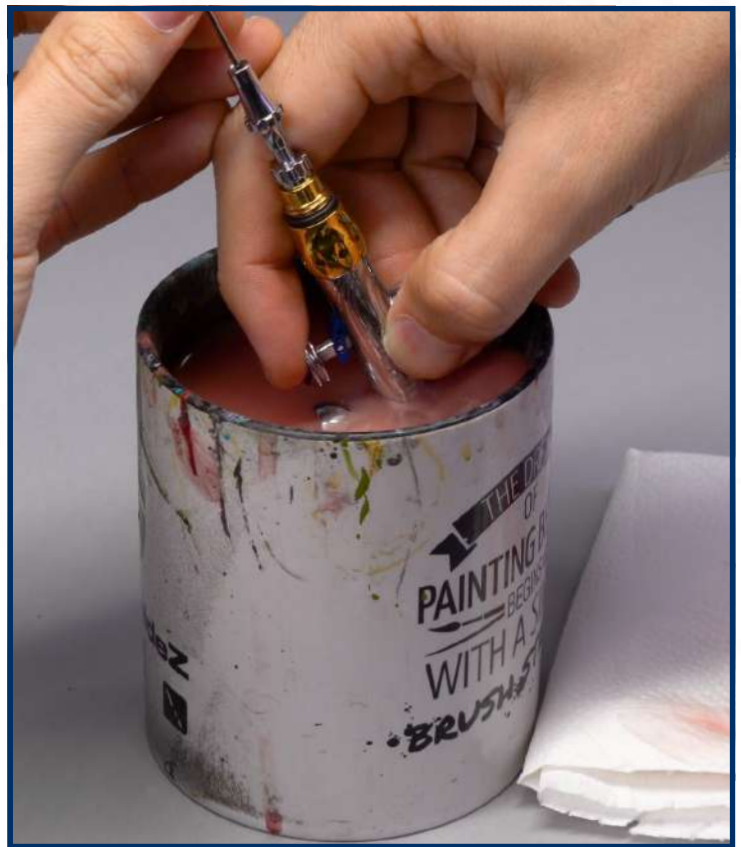


Do not take care of precision at this step, just apply as many layers to cover everything.

# 3.

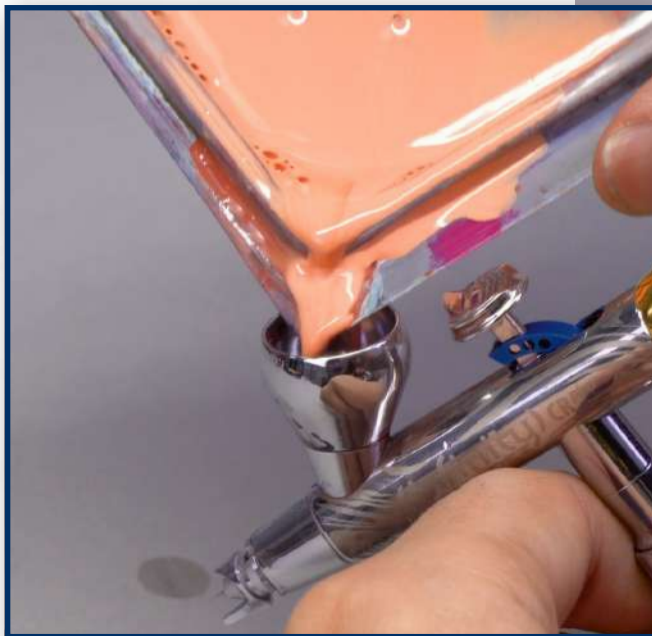
Now I will use another color, but cleaning the airbrush in a "normal" way is not necessary.

A fast and simple way to clean it up is to deep the airbrush in a full water mug and press down the trigger, thus you empty the cup of the airbrush, as well as water gets inside of the airbrush, cleaning it in a simple and fast way.



# 4.

I thin down Rosy Flesh Ref. 72.100 by Vallejo with Airbrush Thinner. I will use this mixture to apply the first highlight. The areas to be highlighted are forehead, cheeks and just a little on the neck.



Do not worry about covering too much of the base color, we will add hues and shadows later.

# 5.

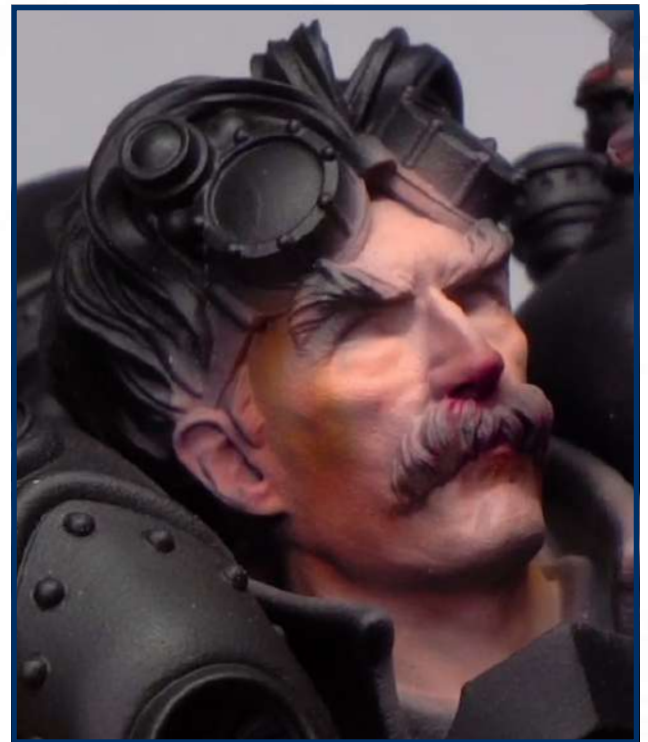
To get a nice skin color, I will use the Xpress Color Cardinal Purple Ref. 72.408 by Vallejo. I dilute it as usual, but thanks to the special consistency of the Xpress color, I can use it perfectly.



To add hues, heavily diluting the paint is advisable in order to apply glazes properly. This time I add this color under the nose and cheekbones.

# 6.

I do a mixture of these Vallejo's Xpress Color colors: Plague Green Ref. 72.419 + Wasteland Brown Ref. 72.420, diluting the mixture with Airbrush Thinner.



With this mixture I apply some glazes to the cheeks, jaw and knee. The aim of this step is to add some hues to the stone, in order to make it looking more real, avoiding the typical "perfect" or "porcelain" skin.

# 7.

I heavily dilute Succubus Skin Ref. 72.108 by Vallejo, and use it to apply glazes to midtones on the face. Thus, integrate the hues from the previous step.



# 8.

Next, I will add illumination as I did on the first highlight. As we did in the beginning, I will apply Vallejo's Rosy Flesh Ref. 72.100 to the forehead and cheeks.

Now, I have to be more accurate than on the 4th step, avoiding covering the previous work.

## REMARK:

for a smaller flow of paint, pull the trigger back just a little.



# 9.

For the next highlight, I do use Pale Flesh Ref. 72.003 by Vallejo, and I thin it down with Airbrush Thinner.

Now, the highlights have to be smaller, for this, I press the trigger down a bit, and pull it back a little.

Thus, the flow of paint is smaller, getting smaller highlights on the forehead and cheeks, and I will not cover the whole previous work.







# 10.

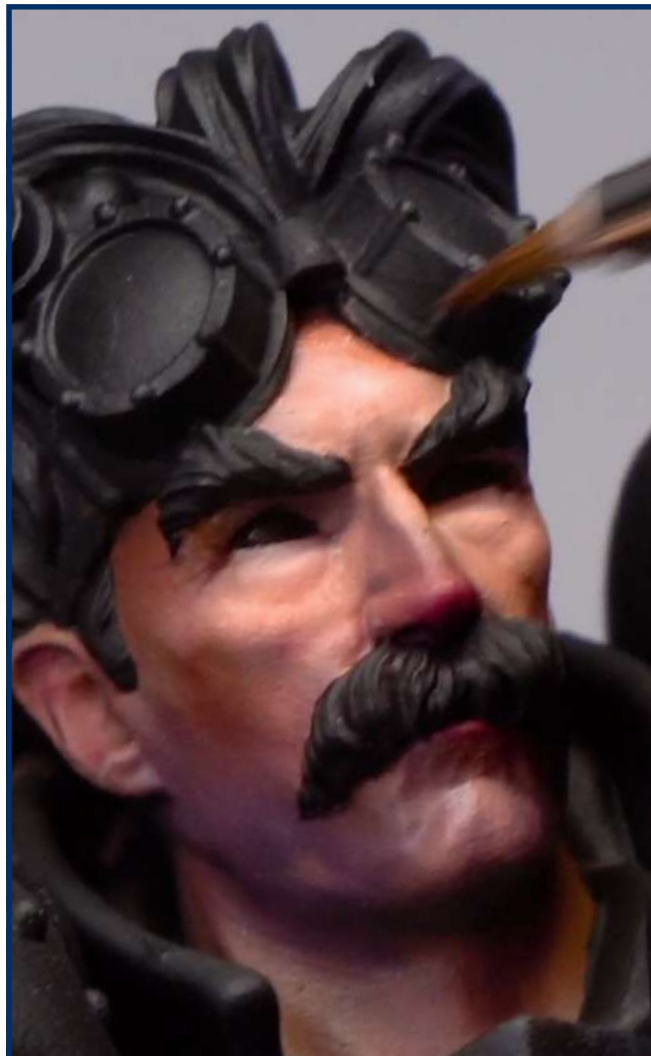
For a shaved effect, I mix 30% Succubus Skin Ref. 72.108 (Game Color) + 70% Storm Blue Ref. 72.412 (Xpress Color), and thin the mixture with Airbrush Thinner.

A very thin mixture is crucial, since we have to apply a soft layer to the chin and jaw.



# 11.

Once finished with the airbrush, it is time to finish the figure by brush. For this final step, you should put all of the colors you have used on the wet palette, and apply them where necessary (lights and shadows).



# 12.

Final Result.





**GIRALDEZ**



**#PaintBIG** 



COMING SOON ON  
KICKSTARTER



# DESK LAMP FOR MINIATURE PAINTING



[www.redgrassgames.com](http://www.redgrassgames.com)

**HARDER & STEENBECK**  
[www.harder-airbrush.es](http://www.harder-airbrush.es)



**(infinity) CR<sup>plus</sup>**  
GIRALDEZ

WWW . **GOBLINTRADER** . ES / GB

# GOBLINTRADER

**BOARDGAMES - WARGAMES - RPG - PAINTING**  
**HOBBY - MERCHANDISING - 3D PRINTING**

**GTS**

DISCOVER OUR  
STORES IN SPAIN  
FREE PLAYING TABLES - TOURNAMENTS  
EVENTS - INTRODUCTORY MATCHES...



## Artis Opus

BEAUTIFUL DISPLAY CABINETS  
FOR MINIATURES AND MORE

Simple, elegant way to display your models and collectables  
Complete with beautiful crisp lighting, straight out of the box  
Wall-hanging or free-standing  
Easily installed on a wall  
Easily-removable magnetic door for ease of access



SCAN HERE  
FOR MORE  
INFORMATION

OUR KICKSTARTER IS NOW LIVE!  
PLEASE SCAN THE QR CODE (TOP LEFT) TO VISIT

WWW.ARTIS-OPUS.COM

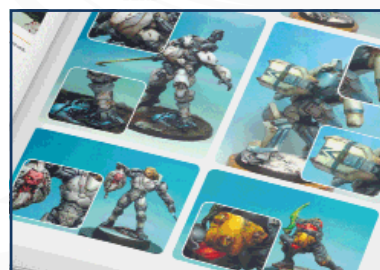
Do you know **Giraldez Models**?  
Discover his incredible 32mm figures  
There's always room for just one more



 **Giraldez  
Models**

If you have liked this Masterclass, if you want to learn much more and want to take your painting skills beyond, do not miss my tow books: **VOL.1 y VOL.2.**

# Painting better is possible!



**GIRALDEZ**