

Angel Giraldez

MASTERCCLASS



GIRALDEZ

How to paint chains and metallic structures using the NMM technique

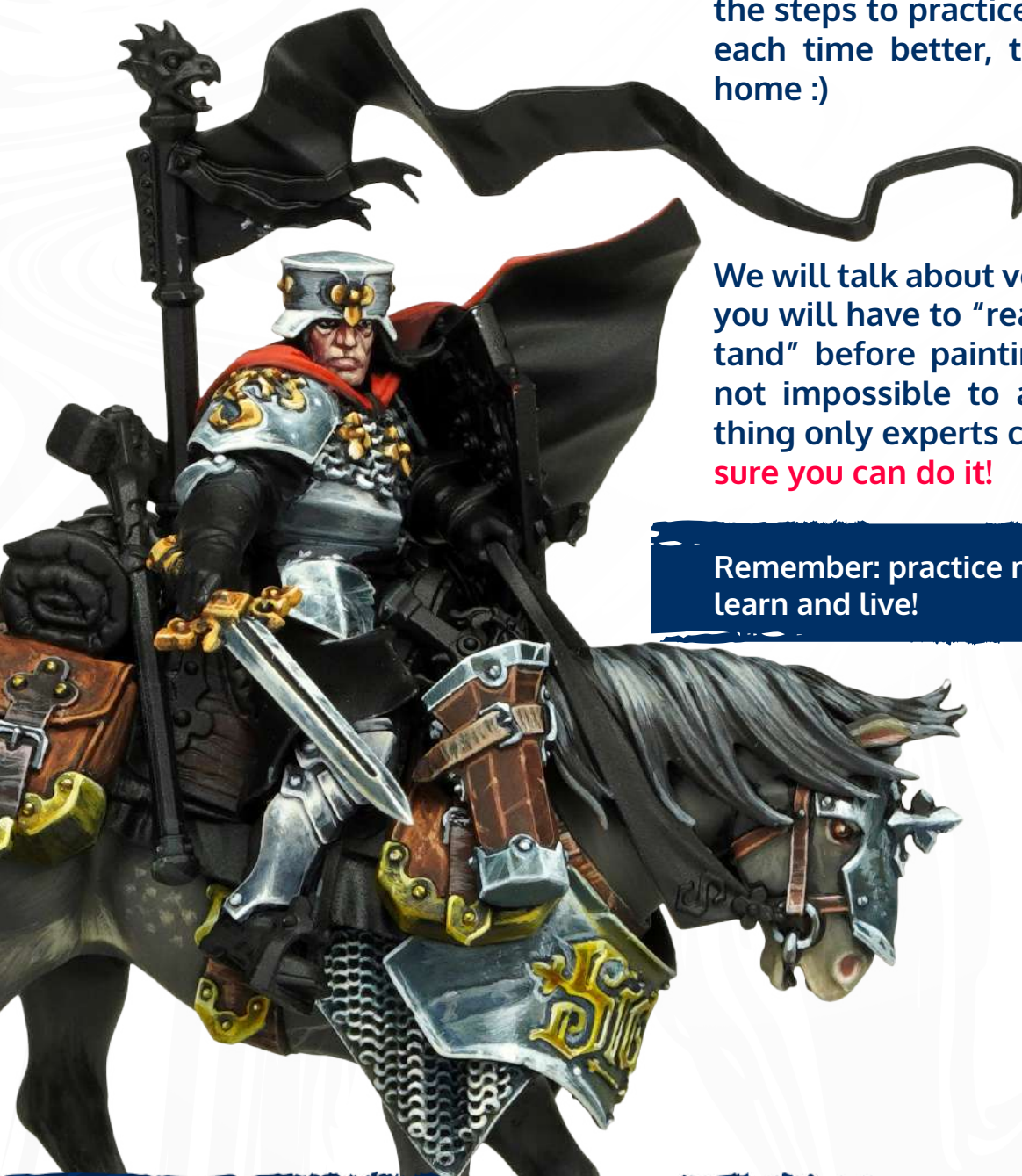
Hi! In this masterclass we will paint some chains with the well-known **Non Metallic Metal** (NMM).

It will be a short guide which you will need to practice to achieve a satisfying result (you may not like to read this, but having doubts is normal, sometimes we just need to effort a bit more and be more patient to master a new technic and enjoy it), but nothing is impossible, do not give up!!

This guide will be your colleague during the process, guiding you over all the steps to practice and replicate it, each time better, this technique at home :)

We will talk about volumetrics which you will have to "reason and understand" before painting, anyway, it is not impossible to achieve, and nothing only experts can do. **I am 100% sure you can do it!**

Remember: practice makes perfect, you learn and live!



At this masterclass we will use this **TEDDY** figure by **WYRD GAMES**. If in addition to know how to paint the chain, want to know how to paint the coat, the tongue or even the fur, here you have the links to the videos I published:

These videos could be so useful, and if you want to be notified about many other painting technique and color scheme videos, and save them to be used on your unpainted figures, do not miss to subscribe to the channel Let's start!

COAT:

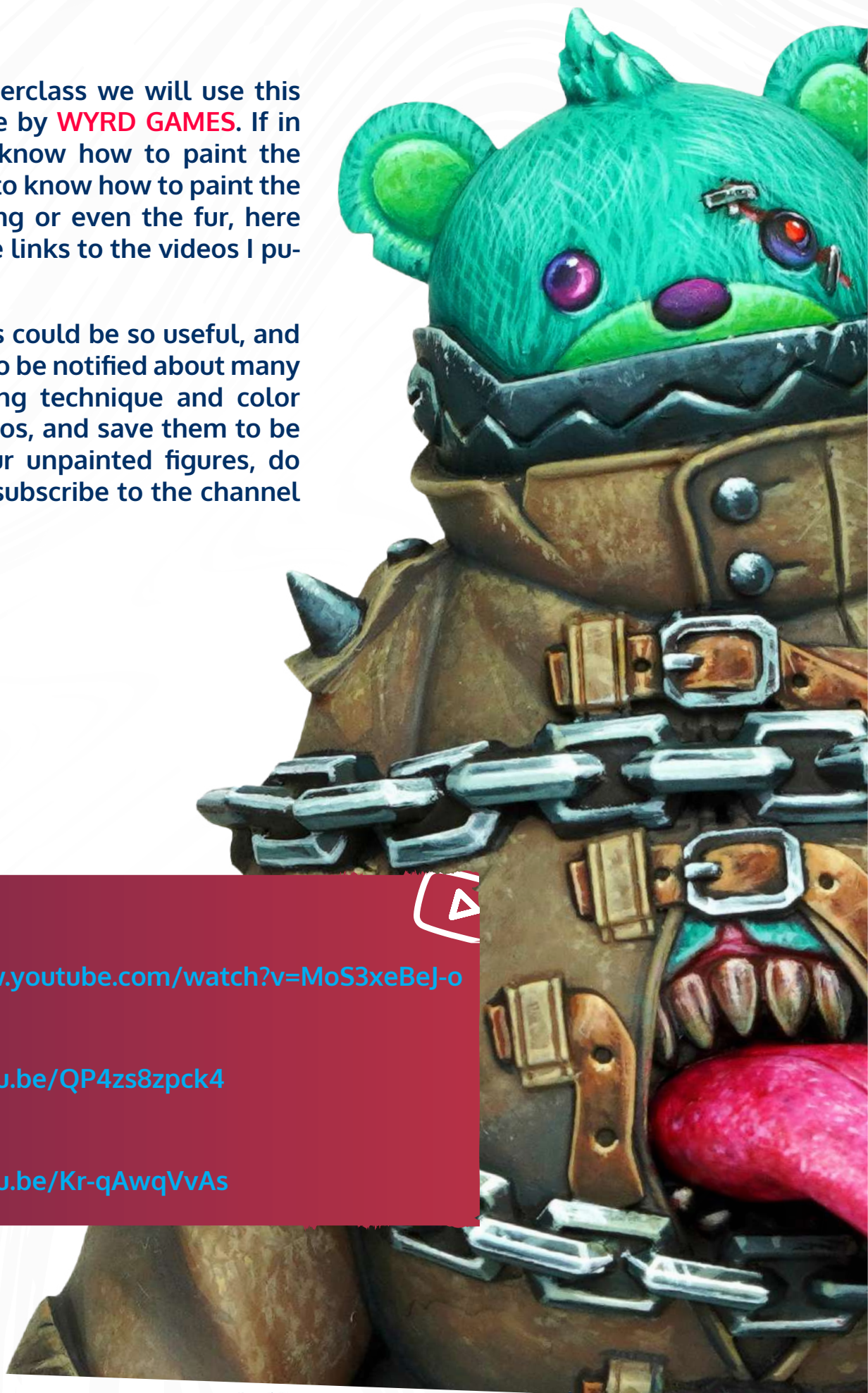
<https://www.youtube.com/watch?v=MoS3xeBej-o>

FUR:

<https://youtu.be/QP4zs8zpck4>

TONGUE:

<https://youtu.be/Kr-qAwqVvAs>





1.

We do use Ref. 70.898 DARK SEA BLUE by Vallejo to paint the base color of the chain. Do not paint deeper/hidden areas of the chain (the hole of each link).



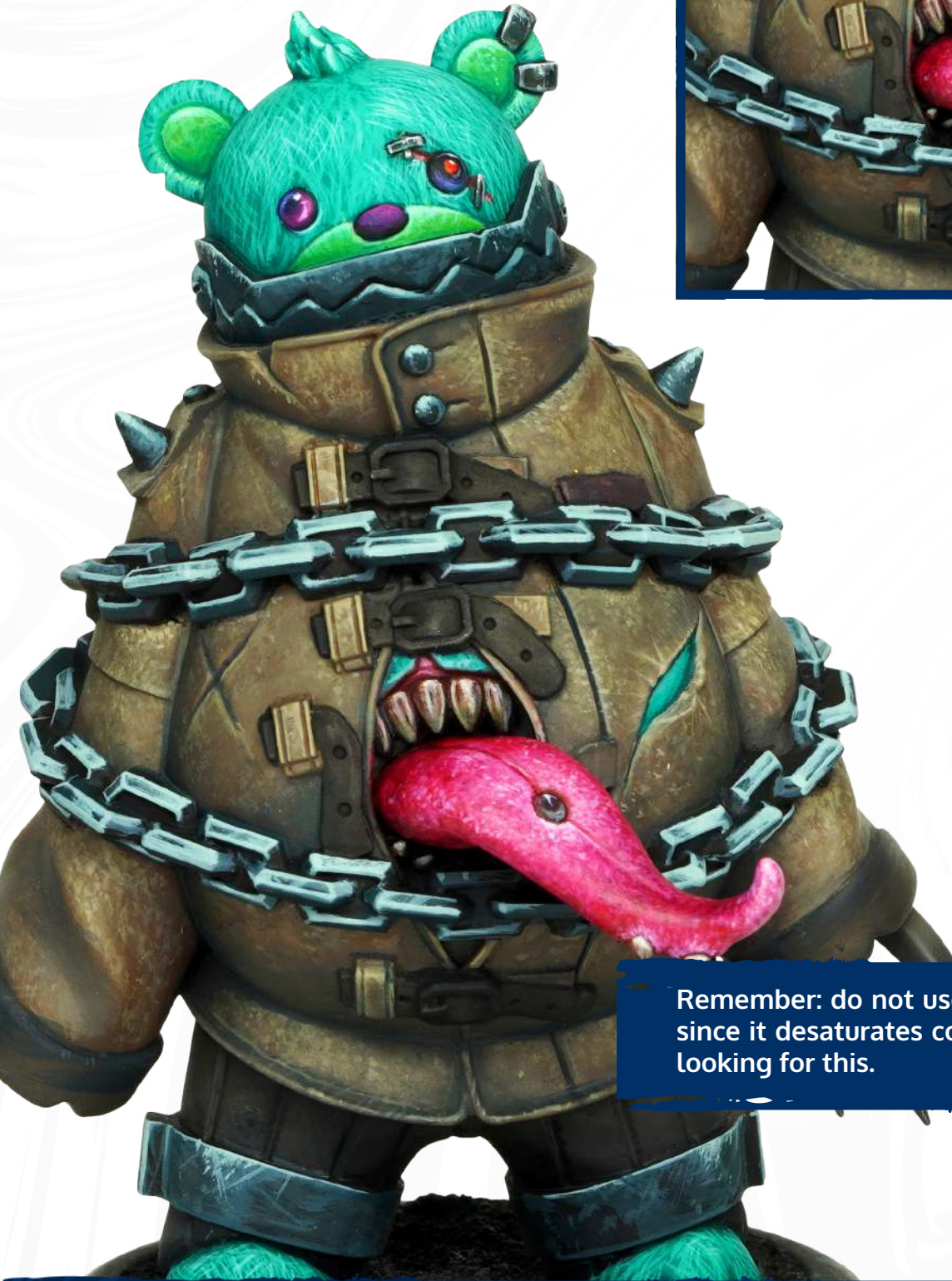
2.

Now, using Ref. 70.964 FIELD BLUE by Vallejo, we will paint the planes of light on each link. Thus we will start creating contrast.

3.

At this step we will mix the color user previously -FIELD BLUE- plus a little Ref. 70.858 ICE YELLOW by Vallejo.

With the color we made, we will add more luminosity, lighting and realism to the texture of the chain.



Remember: do not use WHITE to highlight since it desaturates colors, and we are not looking for this.

4.

To add a pinch of dirty to the chains, we apply a soft wash of Ref. 70.939 SMOKE INK by Vallejo. To create the wash, dilute it with some water.

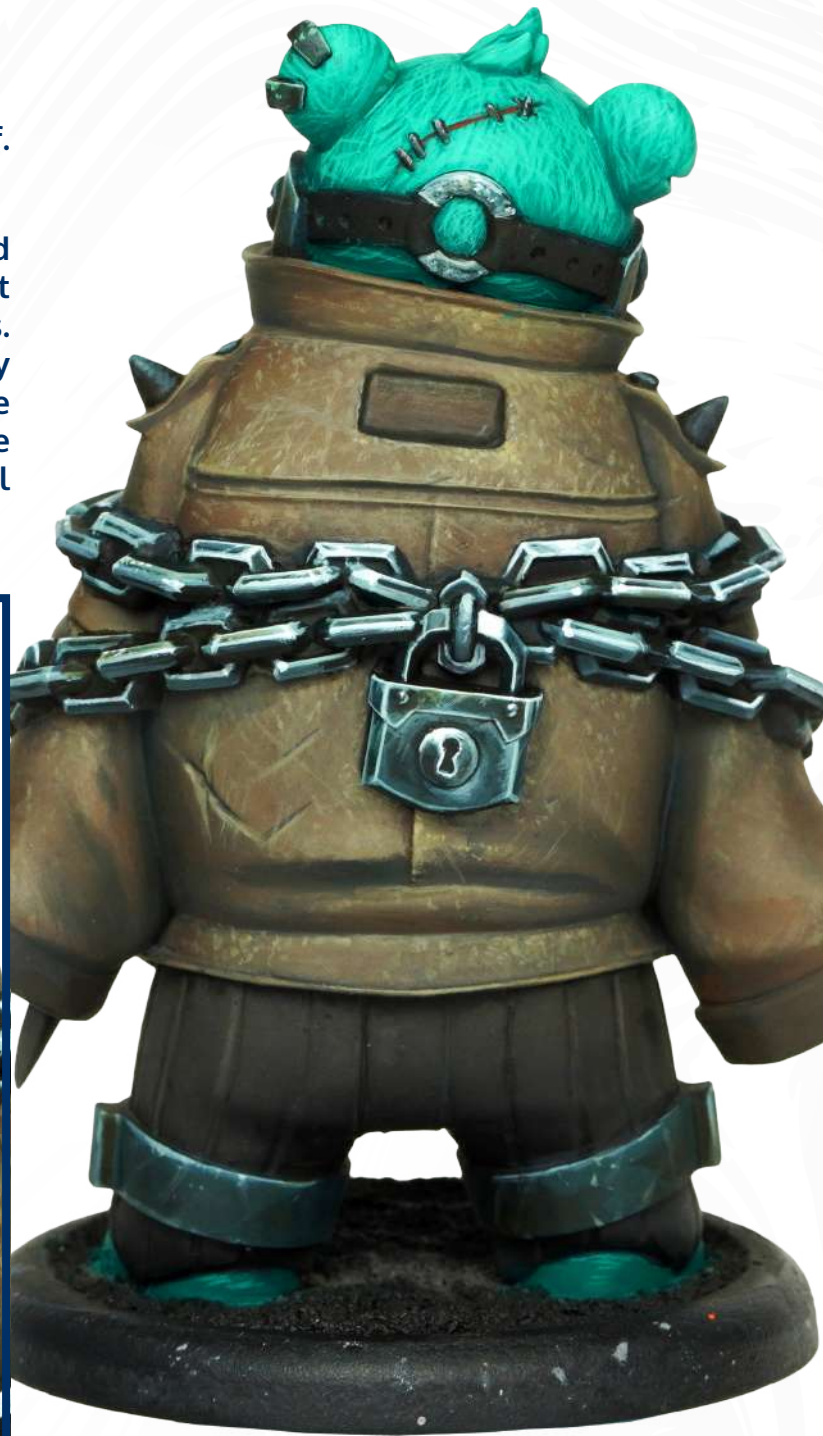
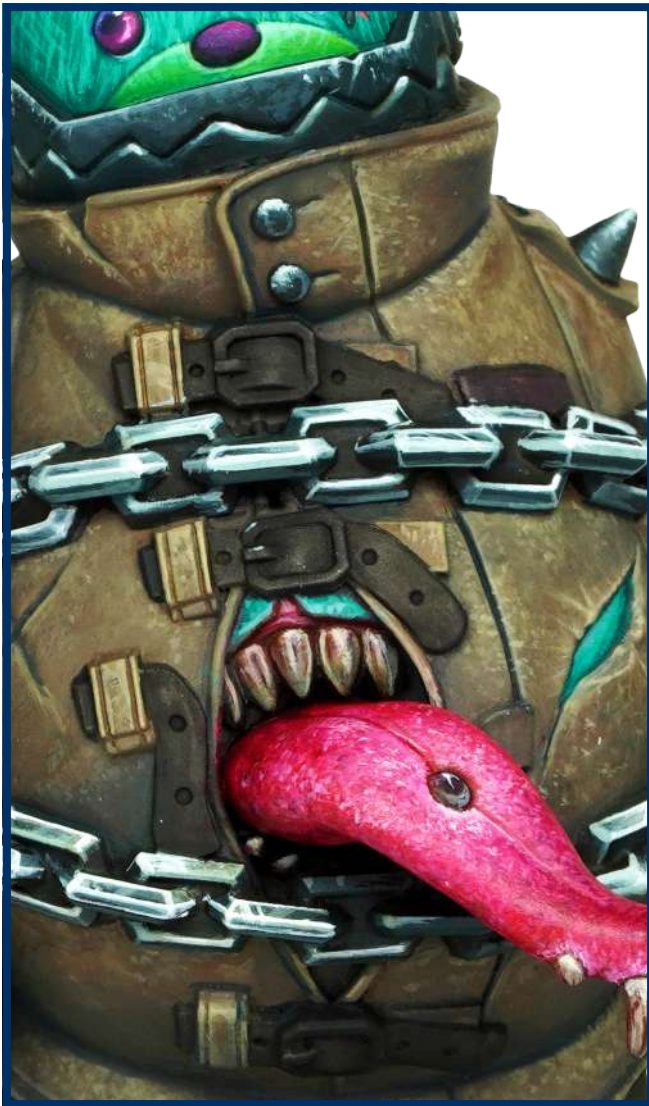
Apply a soft wash to avoid getting an excessive dirty chain, getting sure that details and luminosity do not change.



5.

To finish highlighting, we will use Ref. 70.951 WHITE by Vallejo.

This step is crucial to get a shiny and eye-catching chain. You will notice a great difference with just a couple of touches. Apply these final highlights carefully over the most important points, thus we will create a glow effect that catches the viewer's attention, and improves the final result of the metal



6.

Here you have another view of the previous step. Be careful and do not add too many white dots. Apply them carefully and unhurriedly :)



7.

Finally, we will slightly retouch the shadows using Ref. 70.950 BLACK by Vallejo.

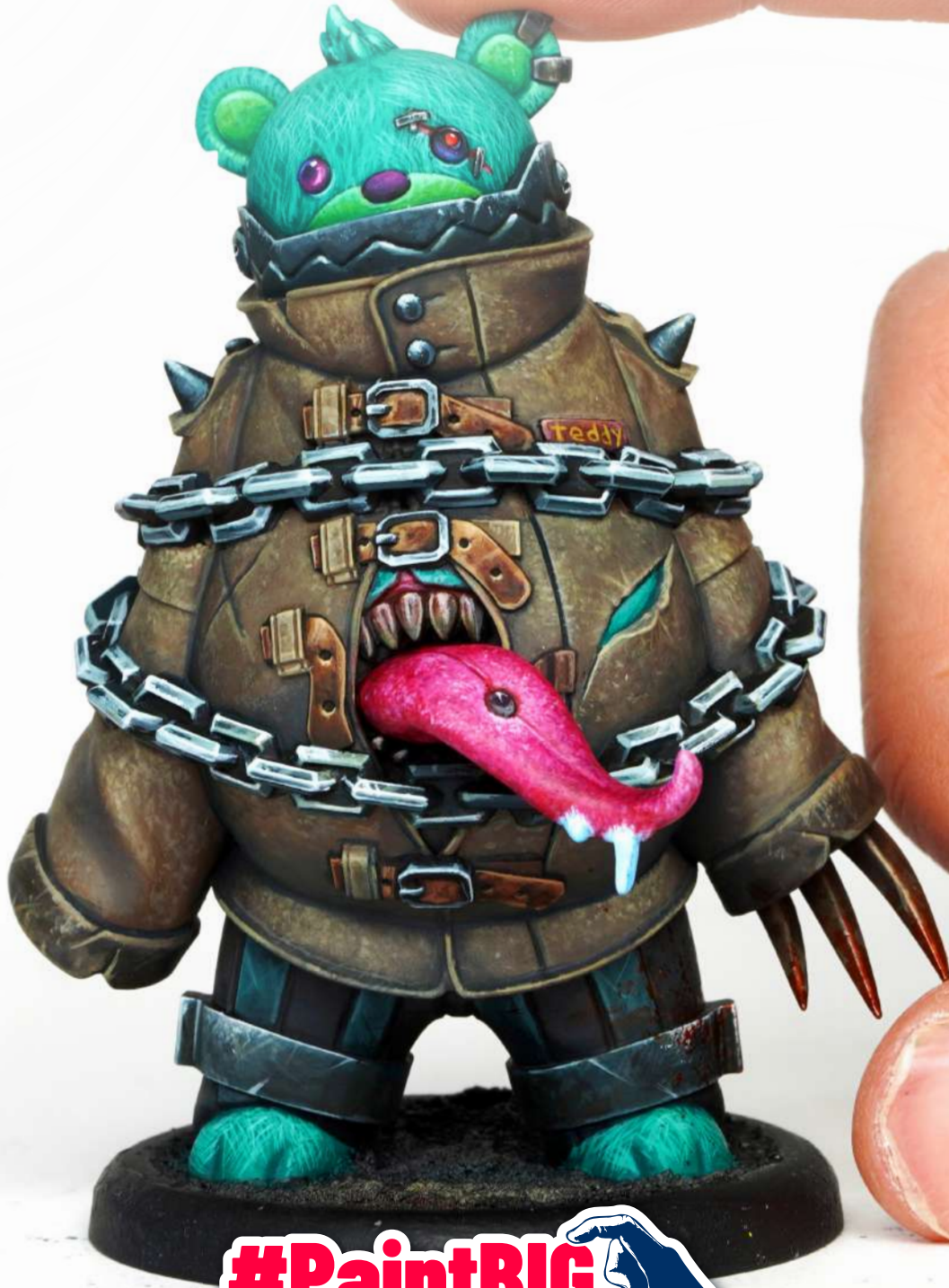
This step will allow us to adjust and add more definition to the darker areas of the chain, adding depth and contrast to an impressive finish.







GIRALDEZ



#PaintBIG 

R9 DESK LAMP

FOR CREATIVE PEOPLE



RedGrass



reddot winner 2023
best of the best

Ultimate Color Experience
With R9 Color Perfect™

2 rotating LED bars
96 innovative LEDs

Pure-White
Daylight 5000K

Unrivaled Power
3700 lux at 45cm

Shadowless
No Glare Technology

Dimmable
10% to 100%

Flicker Free
EMC Safe

Robust
Metal Build

Light Weight
& Foldable



Learn More

Desk Lamp - Wet palette - Painting Handle - Brushes - Nippers

The unrivaled desk lamp that meets all your needs
www.redgrasscreative.com



HARDER & STEENBECK

www.harder-airbrush.es



GIRALDEZ



(infinity) CR^{plus}
GIRALDEZ

#Sponsors

WWW . **GOBLINTRADER** . ES / GB

GOBLINTRADER

**BOARDGAMES - WARGAMES - RPG - PAINTING
HOBBY - MERCHANDISING - 3D PRINTING**

GTS

**DISCOVER OUR
STORES IN SPAIN**
**FREE PLAYING TABLES - TOURNAMENTS
EVENTS - INTRODUCTORY MATCHES...**



Artis Opus

**BEAUTIFUL DISPLAY CABINETS
FOR MINIATURES AND MORE**

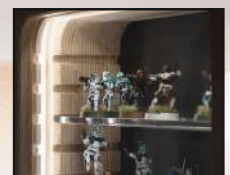
Simple, elegant way to display your models and collectables
Complete with beautiful crisp lighting, straight out of the box
Wall-hanging or free-standing
Easily installed on a wall
Easily-removable magnetic door for ease of access



SCAN HERE
FOR MORE
INFORMATION

OUR KICKSTARTER IS NOW LIVE!
PLEASE SCAN THE **QR CODE** (TOP LEFT) TO VISIT

WWW.ARTIS-OPUS.COM



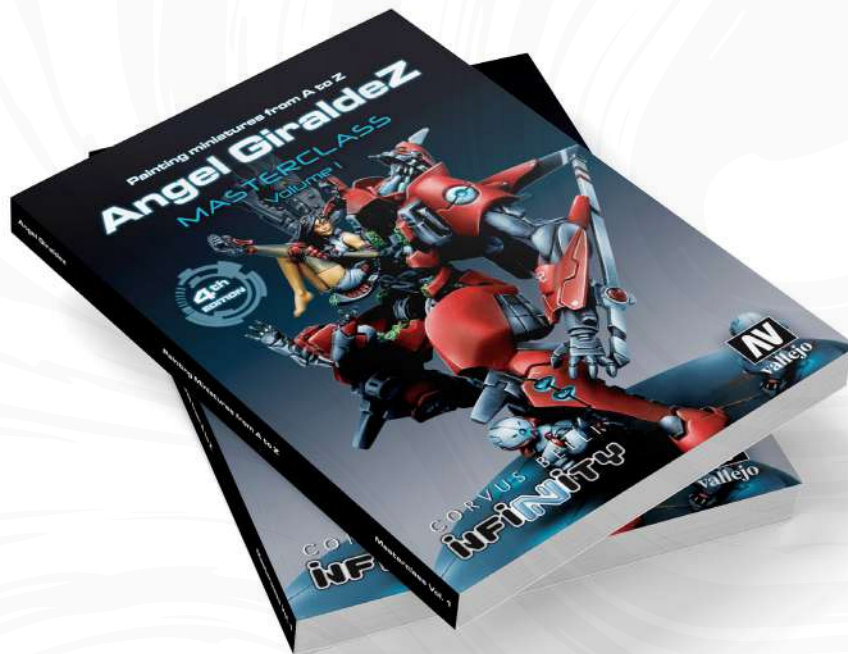
Do you know **Giraldez Models**?
Discover his incredible figures
There's always room for just one more



**Giraldez
Models**

If you have liked this Masterclass, if you want to learn much more and want to take your painting skills beyond, do not miss my tow books: **VOL.1 y VOL.2.**

Painting better is possible!



GIRALDEZ