

Angel Giraldez

MASTERCLASS



GIRALDEZ

How to paint correctly with Aerograph

At this month's MASTERCLASS PDF you will learn all basics about how to handle an airbrush and dilute paint properly. To picture it I will paint a cape that has the perfect volumes to explain it. I will use the **Giraldez Infinity CR Plus**.



The **INFINITY GIRALDEZ** is a double action airbrush, which means that air is released by pressing the trigger down (1), and paint by pulling it back (2).



Some exclusive features of this airbrush are the notch in the trigger (1), which will help you to hold it properly, plus the SKETCHING CUPS (2) that could be spin to let you know where you are aiming to.

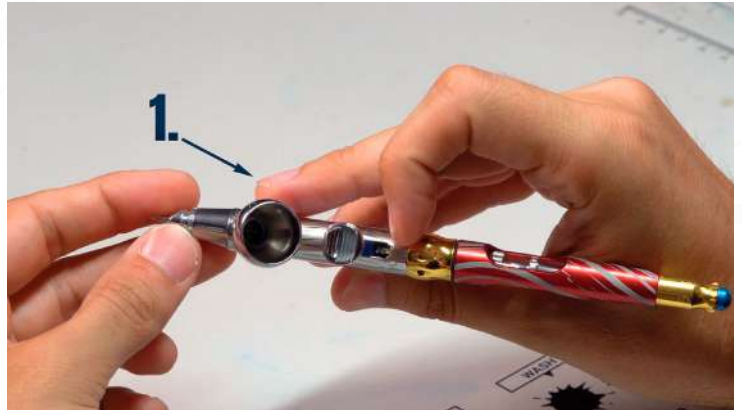


HOW TO HOLD AN AIRBRUSH

There are three footholds to properly hold the brush, like holding some chopsticks:

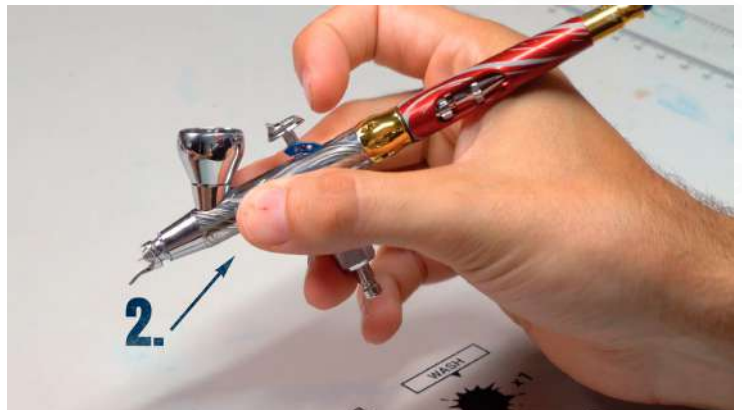
1. _____

Middle finger, it must hold the airbrush from one side, under the airbrush cup.



2. _____

The thumb on the opposite side.



3. _____

Index finger must rest on the trigger.

Rest your index fingertip a bit backward on the trigger, thus, dragging it back and pressing it down will become far easier.



I encourage you to hold the airbrush like this, since it will help you a lot to improve and get a better control of the trigger, but keep in mind that this is not magic, you will notice it in the long run, practice makes perfect!

HOW TO DILUTE PAINT

Another basic thing on airbrushing is how to thin down paint, this will vary depending on the brand of paint you use, and you can use airbrush paints to make it simple.



- Airbrush paints could be used straight from the bottle.



- Normal paints must be thinned down with water or thinner to be airbrushed.



In this masterclass I will use both, airbrush paint and normal paint.

HOW TO PAINT THE CAPE



72.111 Nocturnal Red, 72.011 Gory Red, 72.010 Bloody Red, 72.112 Evil Red.

Base Layer.

Let's get down to business and paint the cape!! I start by applying 3 thin layers of Airbrush Black Primer Ref. 71.261 by Vallejo.



1. Base color.

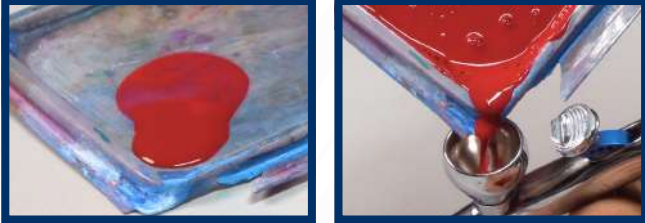
I painted the whole cape with Ref. 76.111 Nocturnal Red / Rojo Nocturno from GAME AIR by Vallejo, as it is an airbrushing paint, I used it straight for the bottle.



As it is the base color, you press the trigger down and drag it back a lot to release more paint and cover a wider area.

2. 1st Highlight

For highlighting the cape, I need a lighter color than Nocturnal Red, so I will use Ref. 72.011 Gory Red by Vallejo. As it is from the GAME COLOR range, we have to thin it down with THINNER or WATER.



Paint must flow as good as the GAME AIR did



Before highlighting, we should analyze the shape of the cape, this one has some big vertical folds, which could be like my fingers. By holding the airbrush by the side of my hand, paint hits the uppermost areas of them, leaving deep areas unpainted.



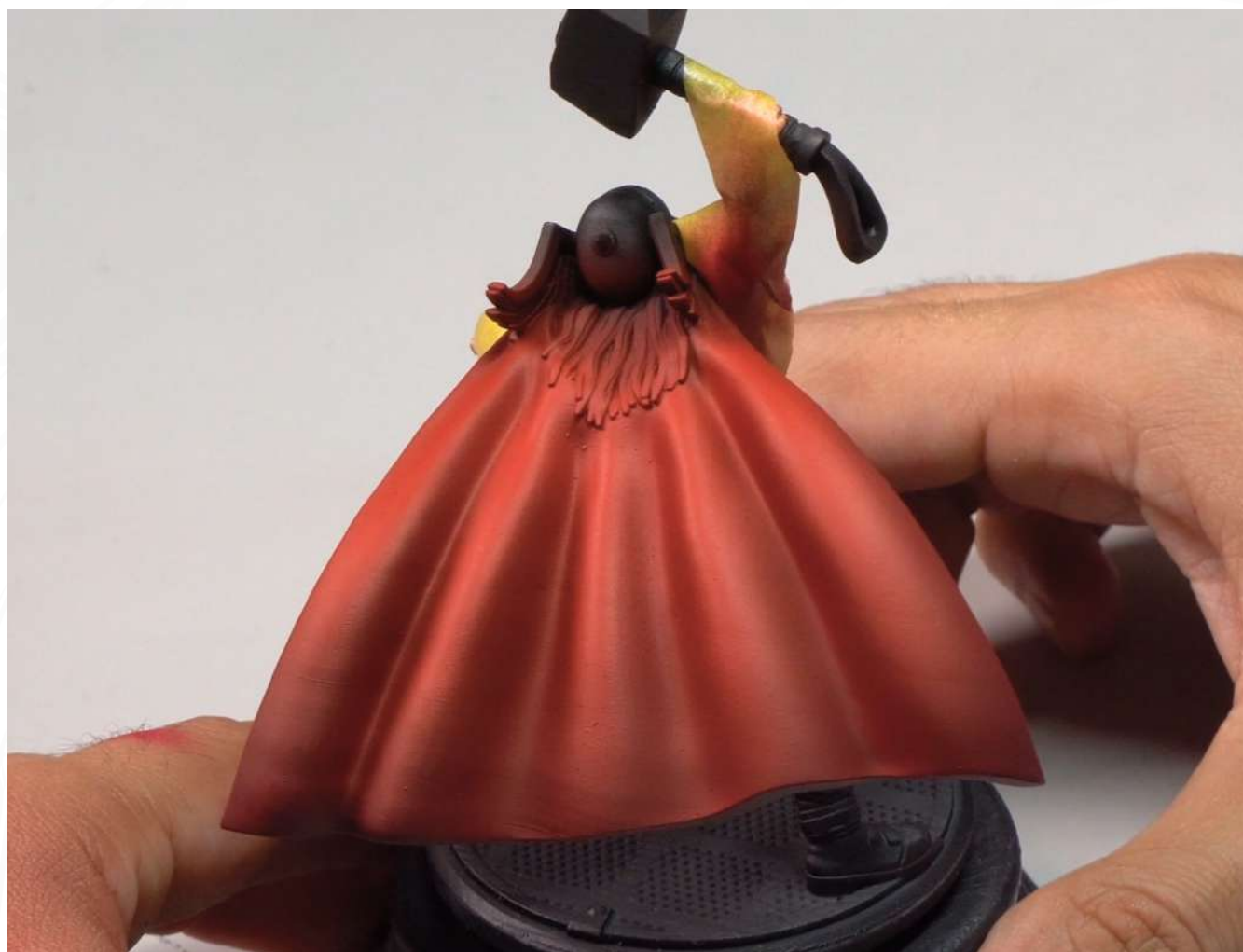
Then, tilt the figure a bit, set the airbrush next to it and gradually press the trigger down, and drag it back to highlight it.

3. 2nd Highlight

For the next highlight I will use Ref. 76.010 Bloody Red by Vallejo, plus a little of the previous color to avoid a too strong red. As the previous red color is from GAME COLOR, I dilute the mixture with SPANISH-WATER.

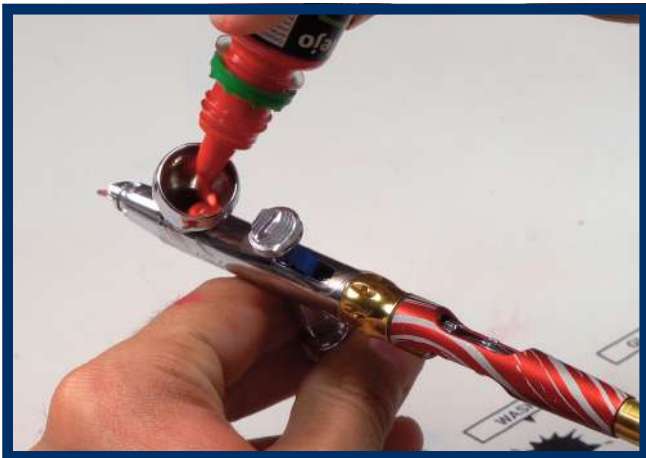


Again, I tilt the figure and hold the airbrush next to it to make paint flow over upper areas.



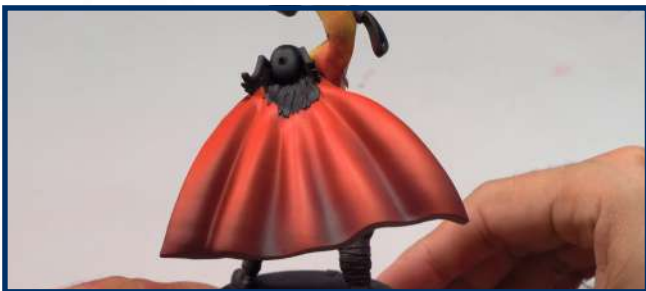
4. 3rd Highlight

For the 3rd highlights I will use Ref. 76.010 BLOODY RED by Vallejo from GAME AIR straight from the bottle, and I focus on the uppermost areas of the folds, not highlighting any lower area.



5. Shadows.

Finally, to shade the cape a darker color than the base color is needed, like Ref. 72.112 Evil Red from Vallejo's GAME COLOR, which I dilute, since it is from GAME COLOR.



To shade the inside of the folds, I get closer to the cape and release paint softly.



FINAL PICTURES



I hope this tutorial has helped you to understand better how to handle the airbrush and dilute paint. If you prefer to watch it in video, follow the next link.

<https://youtu.be/ll2lhpKmAqI>



Additionally, if you liked the Giraldez Infinity, there is a special offer available at my web store. It is a limited offer, since there are few units available!

[Click here to access the offer.](#)

DON'T MISS IT!

G

GIRALDEZ



#PaintBIG 

R9 DESK LAMP

FOR CREATIVE PEOPLE



RedGrass



reddot winner 2023
best of the best

Ultimate Color Experience
With R9 Color Perfect™

2 rotating LED bars
96 innovative LEDs

Pure-White
Daylight 5000K

Unrivaled Power
3700 lux at 45cm

Shadowless
No Glare Technology

Dimmable
10% to 100%

Flicker Free
EMC Safe

Robust
Metal Build

Light Weight
& Foldable



Learn More

Desk Lamp - Wet palette - Painting Handle - Brushes - Nippers

The unrivaled desk lamp that meets all your needs
www.redgrasscreative.com



HARDER & STEENBECK

www.harder-airbrush.es



GIRALDEZ



(infinity) CR^{plus}
GIRALDEZ

WWW . **GOBLINTRADER** . ES / GB

GOBLINTRADER

**BOARDGAMES - WARGAMES - RPG - PAINTING
HOBBY - MERCHANDISING - 3D PRINTING**

GTS

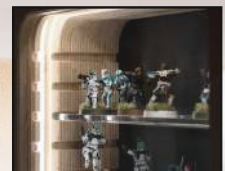
**DISCOVER OUR
STORES IN SPAIN**
**FREE PLAYING TABLES - TOURNAMENTS
EVENTS - INTRODUCTORY MATCHES...**



Artis Opus

**BEAUTIFUL DISPLAY CABINETS
FOR MINIATURES AND MORE**

Simple, elegant way to display your models and collectables
Complete with beautiful crisp lighting, straight out of the box
Wall-hanging or free-standing
Easily installed on a wall
Easily-removable magnetic door for ease of access



SCAN HERE
FOR MORE
INFORMATION

OUR KICKSTARTER IS NOW LIVE!
PLEASE SCAN THE **QR CODE** (TOP LEFT) TO VISIT

WWW.ARTIS-OPUS.COM

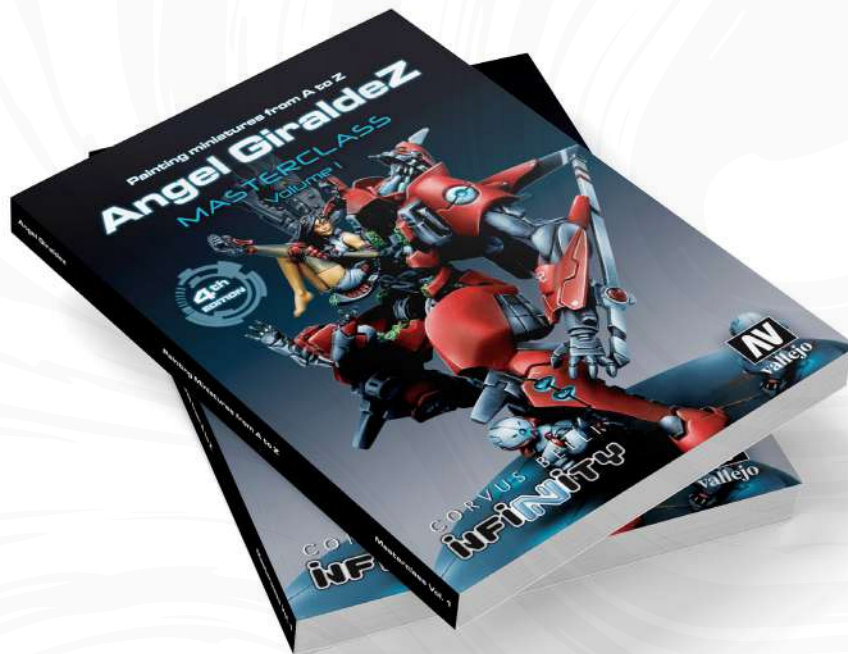
Do you know **Giraldez Models**?
Discover his incredible figures
There's always room for just one more



**Giraldez
Models**

If you have liked this Masterclass, if you want to learn much more and want to take your painting skills beyond, do not miss my two books: **VOL.1 y VOL.2.**

Painting better is possible!



GIRALDEZ