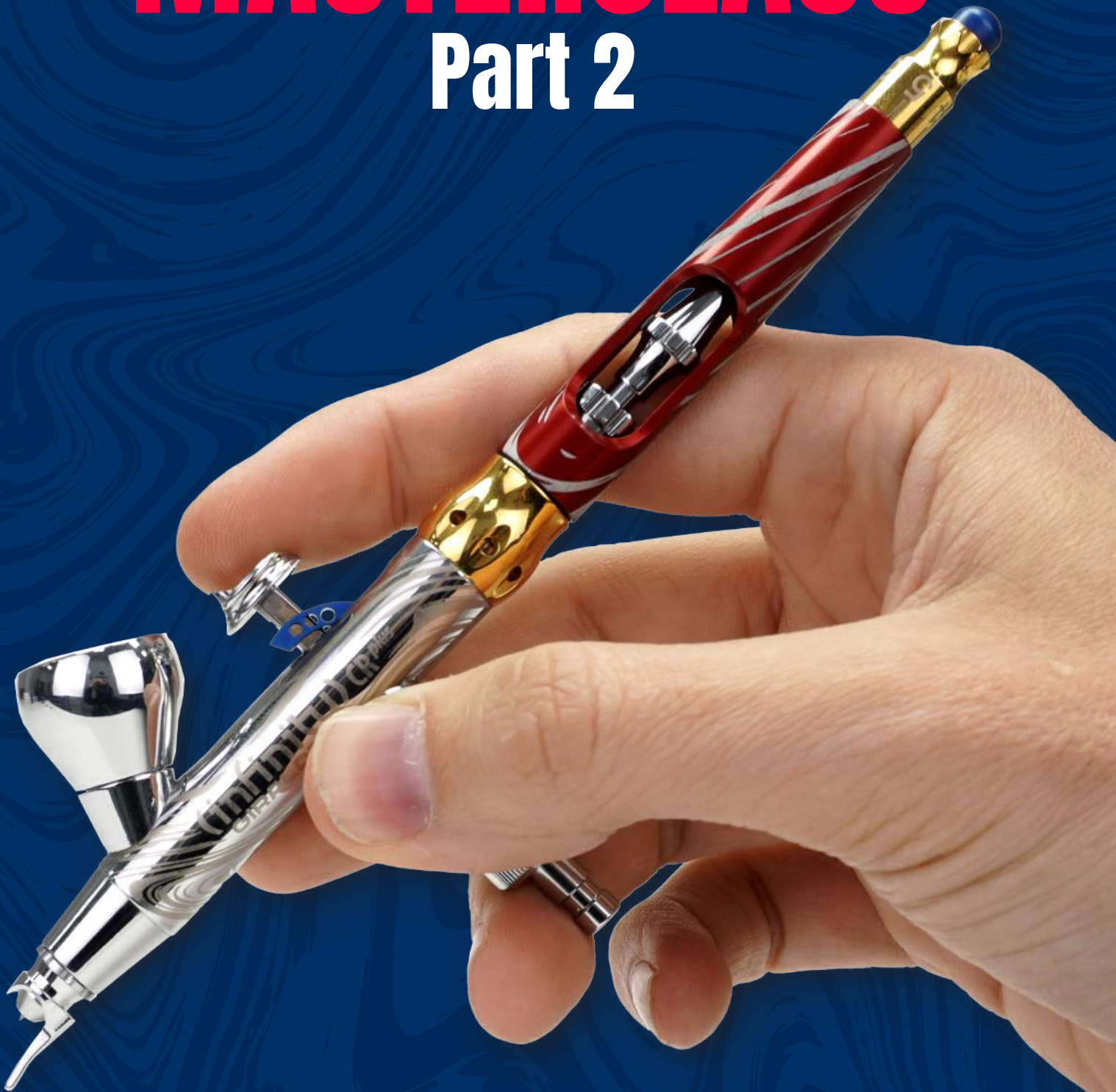


Angel Giraldez

MASTERCLASS

Part 2



GIRALDEZ

How to paint correctly with Aerograph - Part 2

At this month's MASTERCLASS PDF we will continue with the series of airbrushing basics. This time I will teach you how to paint the t-shirt and trousers of this Thor figure. I will use the **Giraldez Infinity CR Plus**, combined with brush to add definition.



Colors:

- 72.148 Warm Grey / Gris Cálido Denso
- 72.051 Black / Negro
- 72.423 Black Lotus / Magnolia Negra
- 72.413 Omega Blue / Azul Omega
- 72.101 Off-White / Blanco Sucio
- 72.020 Imperial Blue / Azul Imperial
- 72.021 Magic Blue / Azul Mágico
- 72.118 Sunrise Blue / Azul Amanecer



PREPARING THE FIGURE

Before continue painting the figure, in order to avoid staining any painted area, I will use **MASKING TAPE** to cover all previously painted parts.



Just peel off a small piece and cover all painted parts.



T-SHIRT

Base Color

For the base color of the t-shirt I mix Ref. 72.148 Warm Grey and Ref. 72.051 Black by Vallejo. 72.148 Warm Grey is a perfect color to highlight black since it is a not much saturated grey.



I thin the mixture down with SPANISH WATER.



I tilt the figure a little and place the airbrush like in the picture to help me to painting the volumes.

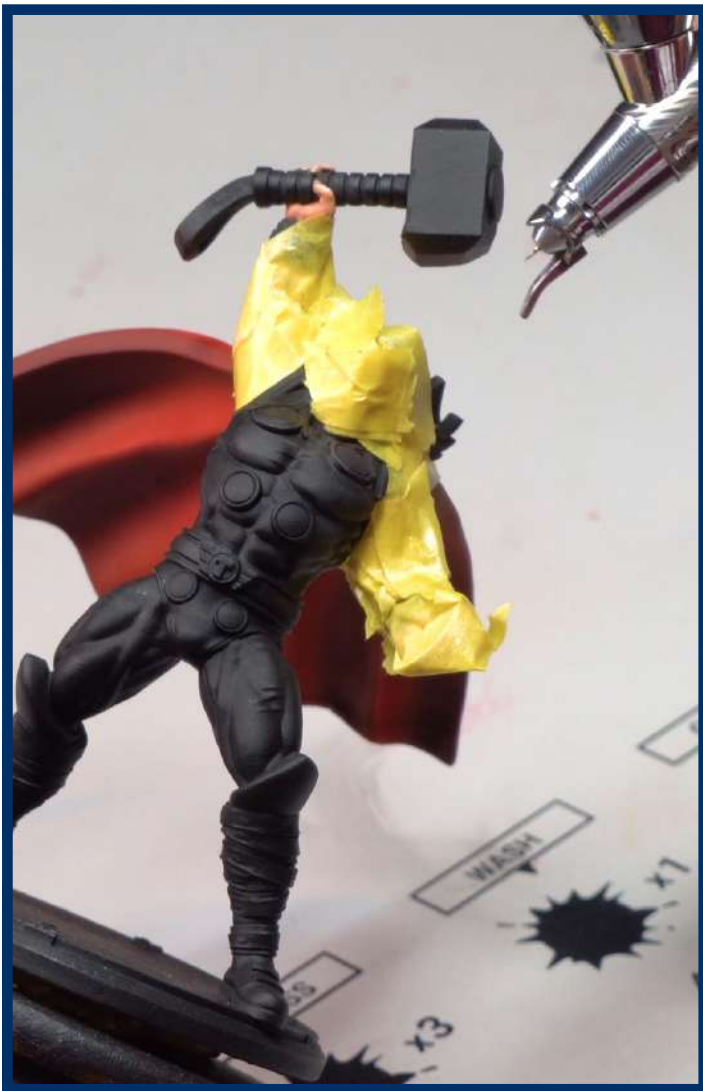


1st Highlight

For the first highlight, I add more Ref. 72.148 Warm Grey by Vallejo to the previous mixture to continue highlighting. As a GAME COLOR paint we must dilute it.



I get closer to the figure while tilting it.



Be careful to highlight black or it may become grey, so I press the trigger down and drag it a little back.

2nd Highlight

I add more Ref. 72.148 Warm Grey by Vallejo to the previous mixture to continue highlighting the t-shirt.



Pay close attention that I am highlighting smaller areas than before since I want to paint some black shiny points.



I turn the SKETCHING CAP to know where I aim to.

3rd Highlight

For the final highlight, I will boost the points of light with Ref. 72.101 Off-White by Vallejo. At this stage, for a better accuracy I press the trigger a little down, and slightly drag it back, thus, I reduce the flow of paint, allowing me to create tiny points of light.



Brush Blacklining

Next, to improve definition I will use a size 1 brush from the series S by ARTIS OPUS to paint shadows with Ref. 72.051 Black by Vallejo.



A perfectly sharpen brush is remarkable now

Hues

To finish the t-shirt, I will airbrush some hues with two XPRESS colors. Applying hues to black is paramount to get a more real result and to avoid a dull color. I will use these Vallejo references: 72.423 Black Lotus and 72.413 Omega Blue.



As the hues must be applied to midtones, airbrush from above of the figure.

Shadows

I will shade the t-shirt a little with Ref. 72.423 Black Lotus by Vallejo. This way I will get more contrast on the clothes. Be careful and apply it by soft touches, if you overdo it, you may obscure the highlights.



TROUSERS

Base Color

Take some time to analyze the volumes of the trousers before starting painting them, they are like three cylinders set horizontally. To paint them I will apply 2 thin layers or Ref. 76.020 Imperial Blue from GAME AIR range, as a GAME AIR color, it is not needed to dilute it.



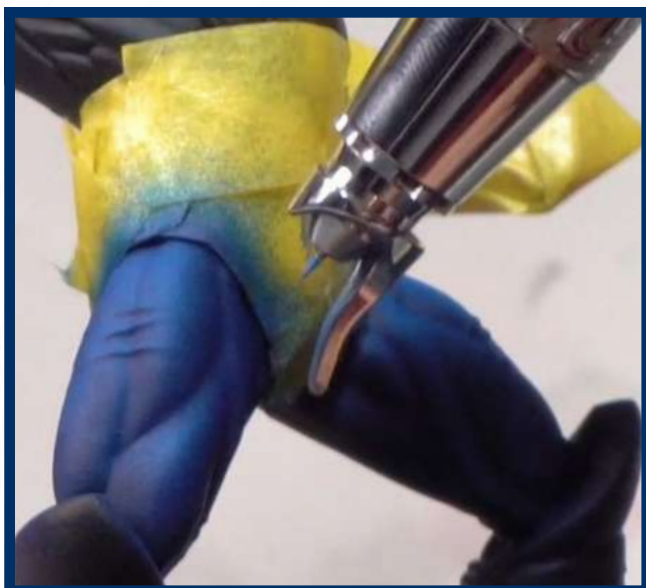
Remember to mask all painted parts to avoid staining them. Here you are Thor, the Thunder God in "diapers".



1st Highlight



For the first highlights I chose Ref. 76.021 Magic Blue from GAME AIR, which I barely dilute to get lower coverage, this way I regulate the color intensity.



I illuminate the upper areas of the volumes, leaving the sides with the base color. As you can see the contrast is more noticeable after this step.

Notice how close I get to properly paint these highlights.

2nd Highlight

For the second highlight I mix Ref. 76.021 Magic Blue and Ref. 76.118 Sunrise Blue by Vallejo. Again I thin down the mixture a little to get more control of the color intensity.

Keep in mind that blue is a cold color, this is why it must be highlighted with a light blue color which contains white. **WARNING.** If you use a blue that contains yellow, it will turn green.



I put both colors inside the cup straight from the bottle and add little water.





3rd Highlight

Next, I will use pure Ref. 76.118 Sunrise Blue by Vallejo to boost the illumination of the trousers.



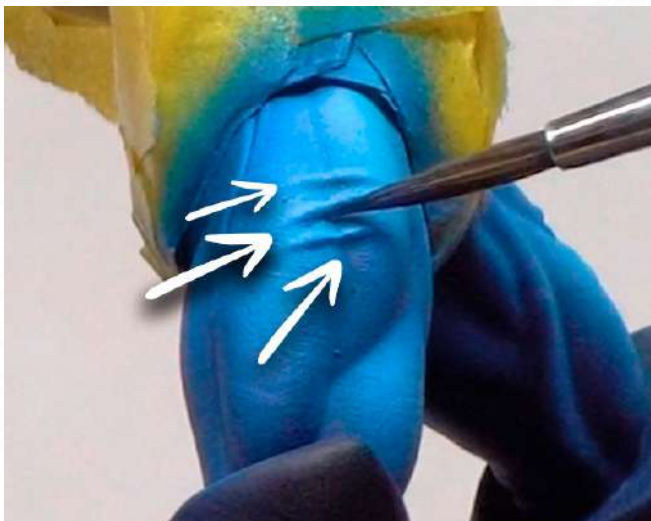
Shadows by brush

As we did with the t-shirt, we must add definition by brush, we will do it by shading the trousers with Ref. 76.021 Magic Blue and Ref. 76.118 Sunrise Blue by Vallejo.





I carefully shade under the most prominent wrinkles.



Boosting midtones

To continue improving the trousers I will add some GLAZES with the XPRESS Ref. 72.413 Omega Blue by Vallejo to boost midtones.





Even it is an XPRESS color, I slightly thin it down to reduce its intensity.



Finally, I remove the masking tape with some tweezers to release the final result.



FINAL PICTURES

Here the final result:



I hope this tutorial has helped you to understand better how to Paint the volumes quickly by the airbrush. If you prefer to watch it in video, follow the next link.

<https://www.youtube.com/watch?v=0QFcASwYKd4&t=81s>



Additionally, if you liked the Giraldez Infinity, it is available at my web store. It is a limited offer, since there are few units available!

[Click here to access the offer.](#)

DON'T MISS IT!



GIRALDEZ



#PaintBIG 

R9 DESK LAMP

FOR CREATIVE PEOPLE



RedGrass



reddot winner 2023
best of the best

Ultimate Color Experience
With R9 Color Perfect™

2 rotating LED bars
96 innovative LEDs

Pure-White
Daylight 5000K

Unrivaled Power
3700 lux at 45cm

Shadowless
No Glare Technology

Dimmable
10% to 100%

Flicker Free
EMC Safe

Robust
Metal Build

Light Weight
& Foldable



Learn More

Desk Lamp - Wet palette - Painting Handle - Brushes - Nippers

The unrivaled desk lamp that meets all your needs
www.redgrasscreative.com



HARDER & STEENBECK

www.harder-airbrush.es



GIRALDEZ



(infinity) CR^{plus}
GIRALDEZ

WWW . **GOBLINTRADER** . ES / GB

GOBLINTRADER

**BOARDGAMES - WARGAMES - RPG - PAINTING
HOBBY - MERCHANDISING - 3D PRINTING**

GTS

**DISCOVER OUR
STORES IN SPAIN**
**FREE PLAYING TABLES - TOURNAMENTS
EVENTS - INTRODUCTORY MATCHES...**



Artis Opus

**BEAUTIFUL DISPLAY CABINETS
FOR MINIATURES AND MORE**

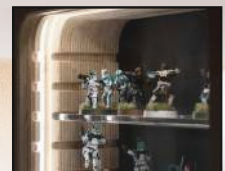
Simple, elegant way to display your models and collectables
Complete with beautiful crisp lighting, straight out of the box
Wall-hanging or free-standing
Easily installed on a wall
Easily-removable magnetic door for ease of access

OUR KICKSTARTER IS NOW LIVE!
PLEASE SCAN THE **QR CODE** (TOP LEFT) TO VISIT

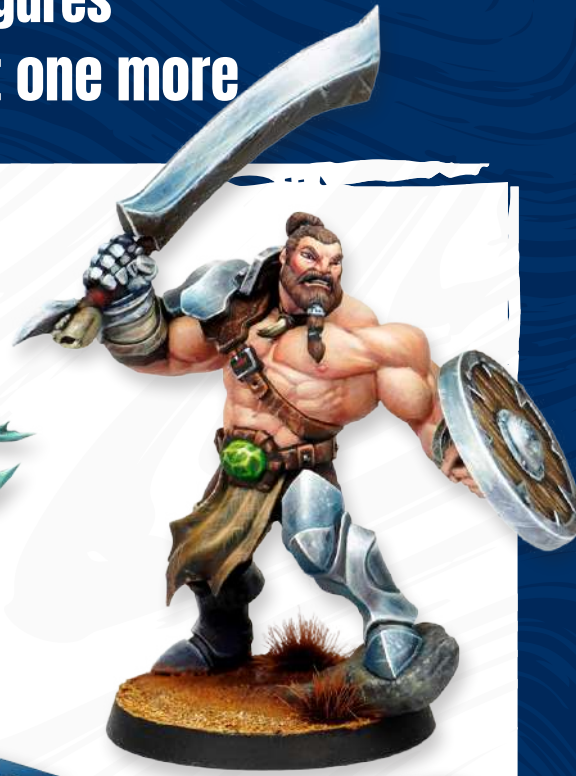
WWW.ARTIS-OPUS.COM



SCAN HERE
FOR MORE
INFORMATION



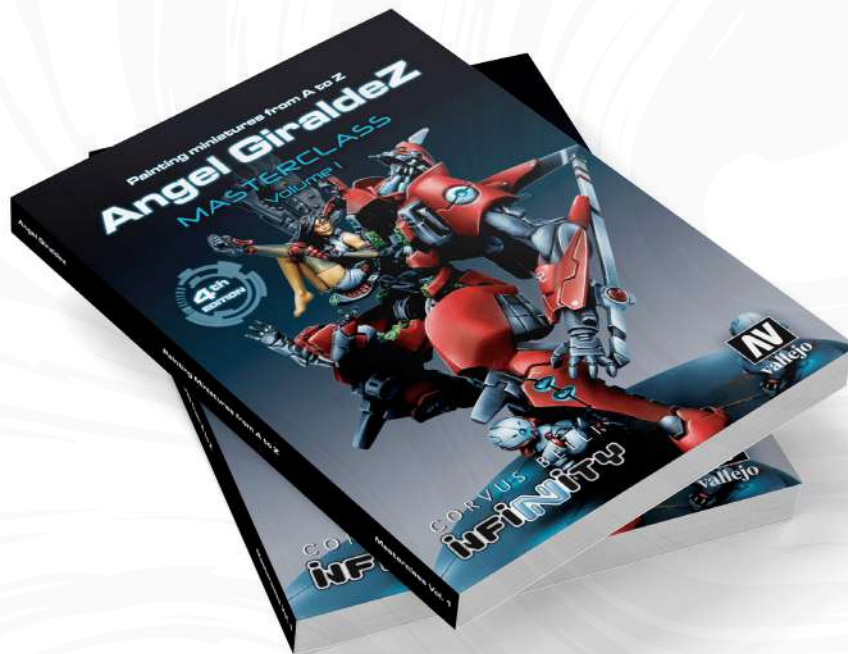
Do you know **Giraldez Models**?
Discover his incredible figures
There's always room for just one more



**Giraldez
Models**

If you have liked this Masterclass, if you want to learn much more and want to take your painting skills beyond, do not miss my tow books: **VOL.1 y VOL.2.**

Painting better is possible!



GIRALDEZ